

Please see instruction sheet for folding instructions. This is a low res pdf. High res layout is a Quark file.



Step 1: Attach (B) to (A). Gently place part B on top of part A and ensure a secure fit is achieved between both parts. The interior walls of part B at the center should sit on the inside of the lip of part A. A secure fit will reduce the likelihood of litter being trapped between both pieces.



Step 2: Attach (C) to (B). Carefully line up all the engagement tabs and press the top housing into the bottom housing. Be sure the walls are aligned and all tabs are securely locked into place.

Note: The top housing is not designed to be removed from the bottom housing after it is locked into place.



Step 3: Attach (D) and (E). Insert the tabs of the scoop holster into the slots of part B and press the holster down until it is firmly attached. Place scoop into the holster. The roll-top lid should move up and down freely.

Important Safeguards

Basic safety precautions should always be followed to reduce the risk of fire, electric shock and injury to persons. Please follow these guidelines:

WARNING: Pregnant women (or those who may become pregnant) and individuals with compromised immune systems should avoid contact with cat waste at all times.

- Read all instructions before using the appliance.
- Plug the AC power adapter directly into a 120V AC electrical outlet to avoid fire or shock hazard.
- Remove plastic bag before using the filters.
- **NEVER** leave a power cord easily accessible to pets or children. Keep the cord out of heavy traffic areas. Never put the cord under rugs, near heat registers, radiators, stoves or heaters.
- **DO NOT** immerse the fan system in water or other liquids or use near water.
- Keep unit away from heated surfaces and open flames.
- Closely supervise appliance use by or near children or disabled persons. **NEVER** allow young children to play in or around the litter box. It is not a toy.
- Always unplug the system before moving it, changing the filters, cleaning or whenever the appliance is not in use. **NEVER** pull the plug out by the cord.
- Never drop or insert any object into the fan housing.
- **DO NOT** operate the appliance with a damaged cord or plug, a malfunctioning motor fan/machine or if it has been dropped or damaged in any manner. Immediately return appliance to manufacturer.
- **DO NOT** attempt to repair or adjust any electrical or mechanical functions on this unit or use any other type of filtration. Doing so will void the warranty. Service with qualified personnel only.
- Use appliance only for intended household use as described in this manual. Not recommended use may cause fire, electric shock or injury to persons. The use of attachments not recommended by the manufacturer may cause hazards.
- **WARNING: DO NOT** use this appliance with any solid-state speed control device.
- **DO NOT** use outdoors.
- **NEVER** block the air openings.
- **DO NOT** place anything on top of the litter box.
- **FOR CAT USE ONLY.** Intended solely for the safe elimination of cat waste.
- Use only the class II transformer provided in this package.

For more information, call 1-800-253-2764
or visit us online at www.bionaire.com.

Standard 1-Year Limited Warranty (See enclosed card)

BIONAIRE™ pure solutions for indoor living
Odor Grabber™
LITTER BOX

© 2008 Sunbeam Products, Inc. doing business as Jarden Consumer Solutions. All rights reserved. Distributed by Sunbeam Products, Inc. doing business as Jarden Consumer Solutions, Boca Raton, Florida 33431. Sunbeam Products, Inc. is a subsidiary of Jarden Corporation (NYSE: JAH). Code: 07880008EM1 P/N: 910030000089 Printed in China.

BIONAIRE™
pure solutions for indoor living

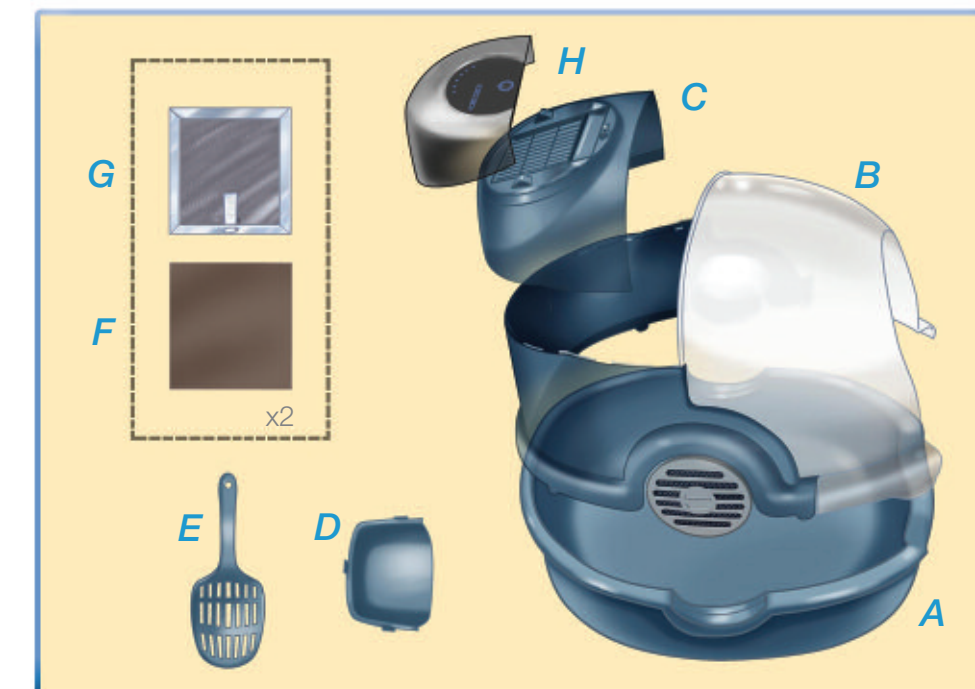
Odor Grabber™
LITTER BOX



Continuously
Eliminates Odor

- Assembling Your Litter Box
- Operating Your Litter Box
- Changing the Filter
- Maximizing Filter Life
- Scooping & Cleaning Instructions
- Introducing Your Cat
- Important Safeguards

100 series
Patent Pending



Assembling Your Bionaire™ Odor Grabber™ Litter Box

Congratulations! You've just purchased the finest odor-eliminating litter box on the planet. Before you begin, make sure that your unit contains the following pieces. Be sure to fully unwrap the entire contents of the package to ensure all of the below parts are included.

Pieces:

- A. Base
- B. Bottom Housing with Roll-Top Lid
- C. Top Housing
- D. Scoop Holster
- E. Scoop
- F. Pre-Filter (x2)
- G. Odor Filter (x2)
- H. Fan Housing
- I. Power Cord (not shown)





Step 4: Install the filters (F) and (G).
Open one set of filters. Place the pre-filter directly over the vent. Then place the odor filter directly on top of the pre-filter. Do not open the other set of filters until they are ready to be used.



Step 5: Attach (H).
Insert the bottom hinge of the fan housing into the slot at the back of part C. Rotate the housing downward and over the filters until it clicks into place. Be sure all edges are flush to reduce the chance of air escaping.



Step 6: Plug in the unit.
Plug the power cord into the back of the fan housing and place the cord where it is not easily accessible to the cat, children or other pets. Add litter and turn on the unit.

Jumbo-size litter liners can be used.

Operating Your Litter Box

- The litter box should remain on at all times to continually eliminate litter dust, dander and odors that flow through the filters. The roll-top lid should remain closed for optimal performance but can be kept open if your cat prefers an open environment.
- The filter indicator lights (available on some models) indicate odor-fighting power. Over time, the lights will turn off to indicate that a new filter is recommended.
- After approximately 8 weeks, the red filter reminder button will illuminate to indicate that a new filter is recommended.



100 Series With Filter Indicator Lights



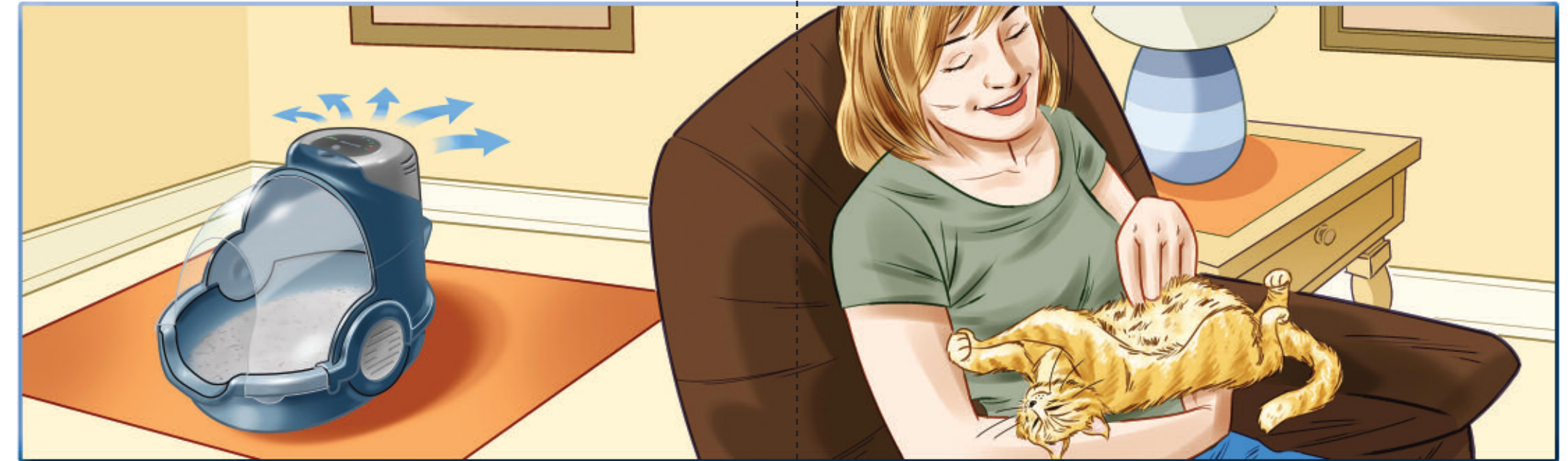
100 Series Without Filter Indicator Lights

Changing the Filter

- When the filter reminder button has illuminated or odors have returned (actual time will vary), open the fan housing to replace the filters.
- Remove and dispose of the pre-filter and odor filter and then replace them with a new set.
- After replacing the filters, close the fan housing and hold down the red filter button for 5 seconds to reset the system.

Tips for Maximizing Filter Life

- Actual filter lifetime will vary depending on litter box location, number of cats, cat dietary factors and other odor contributors. Pay close attention to the level of odor while using the system as it may be necessary to replace the filters prior to the filter reminder light illuminating.
- **DO NOT** open your filters until they are ready to be used. Open filters begin collecting odors immediately and will begin to lose their effectiveness.
- Place the litter box in a well-ventilated area and establish a regular scooping and cleaning routine.
- Provide at least one litter box per cat, plus one extra per household placed in different areas of the home if possible.
- Avoid using heavily scented cleaning solutions, deodorizers or fragrances that may impact filter effectiveness.



Scooping & Cleaning Instructions

- The litter box should be scooped daily to remove the primary source of odor. It is not necessary to clean the scoop after each usage. Any caked-on litter or waste can fall back into the litter box through the holster.
- The litter box should be completely emptied and cleaned once a week.

- Step 1:** Turn off and unplug the system. Remove the fan system and the filters from the litter box. **WARNING:** Do not submerge the fan system or filters. If necessary, the fan system may be wiped down with a clean moist cloth.
- Step 2:** Remove the scoop and scoop holster and then unhook the finger tabs at the bottom of the litter box to separate the entire unit from the base.
- Step 3:** Remove the litter liner (if necessary) and empty and dispose of all litter.
- Step 4:** Clean the housing, base, scoop and holster with a mild detergent and warm water. **ALWAYS** wear rubber or latex gloves when cleaning the litter box.
- Step 5:** Sufficiently rinse and dry the components before reassembling. **DO NOT USE** heavily scented cleaning solutions. Residual fragrances or cleaning odors that remain on the parts may reduce the effectiveness of the filter.

Introducing Your Cat

Not all cats will react to the Bionaire™ Odor Grabber™ Litter Box in the same way. Carefully introducing your cat to a new litter box is an important and easy way to keep them happy and comfortable. We've provided the following tips to help you transition your cat.

- After assembling your Odor Grabber™ Litter Box and adding your litter of choice, place it next to your cat's existing litter box.
- Leave the lid open. **DO NOT** turn on the system.
- After your cat has begun to use the new litter box, close the lid so that your cat can get used to the added privacy. Although performance will not be optimized, you can keep the lid open if your cat prefers an open litter box.
- Once your cat is using the litter box comfortably, turn on the litter box and allow your cat to get used to the low level of noise from the system.
- When your cat is fully adjusted, remove your old litter box.
- Maintain a routine scooping and cleaning schedule to ensure your cat's healthy and happy lifestyle.